



EXPANDING ACCESS TO QUALITY FAMILY PLANNING AND PRIMARY HEALTH CARE SERVICES

|| Volume 11 || January 2023 || #knowitplanit



# STEERING THE RUDDER IN UNCHARTED WATERS

## FROM THE EDITOR'S DESK



**Jane Egbuchiem**

Communication and Knowledge Management Advisor, IntegratE

Welcome to the Quarter 4, 2022 newsletter of the IntegratE project. Our mission is to ensure the sustainable provision of high-quality family planning (FP) and primary healthcare (PHC) services by empowering Community Pharmacists (CPs) and Patent and Proprietary Medicine Vendors (PPMVs). Through this initiative, we aim to enhance access to essential primary care services for women and communities.

The project focus states cut across the South (Lagos & Enugu States), North-Central (Nasarawa), North-West (Kano, Kaduna, Sokoto states), and North-East (Gombe State). By collaborating with local stakeholders and health professionals, we strive to bridge the gap in healthcare accessibility and contribute to the overall well-being of communities.

In this edition, we will share the latest updates, success stories, and insights from our efforts to empower and support CPs and PPMVs in delivering essential family planning and primary healthcare services. We invite you to join us on this journey towards a healthier and more equitable future for all.

Let's make a positive impact together!

## INTEGRATE PROJECT STEERING COMMITTEE MEETING

On the 8th of November, 2022, the Wells Carlton Hotel & Apartments in Abuja played host to the sixth IntegratE Project Steering Committee Meeting. The meeting served several important purposes, including the formal introduction and warm welcome of new members to the steering committee. It also offered an opportunity to review the project's accomplishments and challenges over the past year, as well as discuss emerging issues and the necessary support to keep the project firmly on track.

Notable attendees at the event included Pharm Ibrahim Ahmed Babashehu, the Registrar of the Pharmacy Council of Nigeria (PCN), along with several esteemed directors from PCN and PSN. Additionally, representatives from key partners such as the Population Council, Association of Community Pharmacists of Nigeria (ACPN), Solina group, and Development Outcomes & Support (DOS) Centre were present. The SFH team, led by the Managing Director, Dr. Omokhudu Idogho, and the dedicated IntegratE Project team, led by the Chief of Party, Pharm Emeka Okafor, were actively involved in the discussions.



Pharm. Ibrahim Ahmed Babashehu (PCN Registrar) giving his opening remarks at the meeting.



Dr. Omokhudu Idogho giving his welcome remarks at the meeting.



Pharm Emeka Okafor (Chief of Party, IntegratE) giving a speech during the meeting.

The meeting centered on robust discussions aimed at fortifying, enhancing, and broadening access to high-quality Family Planning and Primary Health care services throughout Nigeria. Both the government and partnering organizations reaffirmed their unwavering support for the IntegratE project, underscoring their shared commitment to ensuring that every woman and girl in Nigeria can readily access essential family planning services.

## PARTICIPATION AT THE INTERNATIONAL CONFERENCE ON FAMILY PLANNING (ICFP) 2022

The International Conference on Family Planning (ICFP) stands as the most extensive scientific gathering focusing on family planning and reproductive health worldwide. It holds a pivotal role in the global reproductive health community, serving as a crucial turning point that offers countries, organizations, and individuals a prominent platform to announce significant commitments and commemorate notable accomplishments in the field.

The IntegratE Project actively participated in the ICFP 2022, which took place in Pattaya, Thailand, from November 14 to 22. This significant event brought together influential collaborators and decision-makers from the family planning community to strategize on sustainable approaches and innovative methods to promote the adoption of family planning practices aligned with sustainable development goals.

The conference attracted over 70 delegates hailing from various countries, including donors and partners. Among the attendees were the distinguished representatives of the IntegratE Project, led by the Chief of Party, Pharm Emeka Okafor, alongside Dr. Toyin Akomolafe, the Research Monitoring and Evaluation Advisor at the Population Council in Nigeria, Pharm. (Mrs.) Emily Olalere, the Director of the Program Coordinating Department at the Pharmacy Council of Nigeria (PCN), and Ms. Rodio Diallo, a Senior Program Officer from the Bill & Melinda Gates Foundation.



Pharm Emily Olalere & Dr. Toyin Akomolafe at the conference.



Mrs. Rodio Diallo (BMGF) & Pharm Emeka Okafor (Chief of Party, IntegratE) at the conference.

During the event, the team shared valuable insights gained from their efforts to expand access to family planning through the PCN tier accreditation initiative implemented in Lagos and Kaduna states. These experiences served as important lessons to be applied in advancing family planning services for sustainable development.

## INTEGRATE PROJECT WORK PLAN MEETING

The IntegratE Project team, alongside SFH Management, Population Council, Nivi, AN Impact, Pharmacy Council of Nigeria (PCN), and Pharmaceutical Society of Nigeria Foundation (PSNF), recently conducted a comprehensive review of their Year 1 activities and developed a well-planned work strategy for Year 2. This productive retreat took place at Reiz Continental Hotel in Abuja from November 28 to 29, 2022. Notably, Nigeria Health Watch, a partner of SFH, also had some of its team members in attendance.

The primary objective of this retreat was to pilot innovative approaches for testing, integrating, and enhancing the delivery of quality family planning (FP) and primary healthcare (PHC) services by Community Pharmacists (CPs) and Patent and Proprietary Medicine Vendors (PPMVs) across the eleven implementing states. Additionally, the team actively explored methods to expand access to and utilization of FP and PHC services while simultaneously generating crucial evidence to support incremental policy changes at both state and federal levels.



Pharm. Ibrahim Ahmed Babashehu (PCN Registrar) giving his opening remarks at the meeting.



Participants during a session at the meeting



Participants during a session at the meeting

## Training of Trainers' Program for IntegratE field staff on Social and Behavior Change Material for Family Planning and Key Household Practices

In November 2022, the IntegratE team, in collaboration with the Health Promotions Division of the Family Health Department, organized a Training of Trainers' workshop. This workshop aimed to equip IntegratE regional managers and state team leads with essential knowledge on Social Behaviour Change (SBC) materials concerning family planning and key household practices.



IntegratE Project team with facilitators and participants at the meeting

The workshop's primary objectives were as follows:

- Provide comprehensive training to IntegratE staff on the recently updated Social Behaviour Change (SBC) materials endorsed by the Federal Ministry of Health (FMOH) for Family Planning (FP) and Integrated Community Case Management of Childhood Illnesses (ICCM).
- Facilitate discussions and knowledge-sharing sessions related to the SBC materials, focusing on effective implementation strategies and approaches.
- Collaboratively devise and discuss the subsequent steps required for smooth implementation at the state level.



Group work session at the meeting



A role play session at the meeting.

## UPDATES FROM THE SOUTH (LAGOS & ENUGU STATES) STAKEHOLDER ENGAGEMENTS

### Stakeholders' Consultative Meeting on SEMA Market Study

As part of its commitment to collaborating with and engaging key government stakeholders, IntegratE has been actively involved in creating a supportive operating environment for Community Pharmacists (CPs) and Proprietary Medicine Vendors (PPMVs). The project team took part in various engagements in both Lagos and Enugu states.

In Lagos, a stakeholders' consultative meeting on SEMA market study was conducted on November 4, 2022. The meeting's objectives were to assess the National Health Markets Framework Indicators, gather stakeholders' perspectives on Sexual Reproductive Health (SRH) market challenges and priorities in Lagos, and collectively develop recommendations to strengthen the SRH market in the state.



Stakeholders at the LGA RMNCAH+N scorecard

On December 6, 2022, the Lagos State Ministry of Health (LSMOH) Health Promotion and Education Unit's State Mobilization Committee workshop was held. The workshop aimed to discuss lessons learned, best practices, bottlenecks, and solutions for increasing knowledge, promoting behavior change, and generating demand for family planning and Primary Health Care (PHC) services across Lagos state. Stakeholders from various organizations, including LGA health educators, IntegratE project, SMC chairman, LSMOH, LSPHCB, and development partners, participated in the workshop.

The topics covered included the reporting template for social mobilization activities, development of referral cards, and engagement with the IntegratE project IPCA (Inter-Professional Care Alliance) and terms of reference. Key issues identified during the workshop were the need for more consistent engagement by partners, lack of motivation, inadequate recognition of SMC, and challenges related to funding and social support.

In Enugu, an advocacy visit was made to different ACPN (Association of Community Pharmacists of Nigeria) zones across the state and PPMVs groups in October and November 2022. The purpose of these visits was to encourage CPs and PPMVs to renew their licenses and also to attract new providers to register with the project

## Specialized training on Integrated Community Case Management (ICCM) and Tuberculosis case management

During the quarter in October 2022, a significant effort was made to enhance service quality in EPE LGA. As part of this strategy, eleven PPMVs (Patent and Proprietary Medicine Vendors) underwent specialized training on Integrated Community Case Management (ICCM) and Tuberculosis case management. Among the participants, there was one male and ten females who benefited from the training, which took place from 3rd to 8th October 2022.

The primary objective of the training was to empower PPMVs in Epe LGA with the necessary skills and knowledge to deliver high-quality Primary Healthcare (PHC) services. Additionally, the training aimed to equip them to actively engage in tuberculosis case search interventions and other demand creation activities, thereby strengthening their role in the community's healthcare provision.



Participant with Mrs Ogunmokon Public-Private Mix DOTS (PPM) Focal Person LSMOH

In October 2022, a refresher training program was organized for a total of one hundred and fifty-three (153) trained providers. This group included one hundred and twenty-two (122) Patent and Proprietary Medicine Vendors (PPMVs) and thirty-one (31) Community Pharmacists (CPs). The training sessions were conducted across eight Local Government Areas (LGAs) namely Alimosho, Amuwo Odofin, Ajeromi Ifelodu, Agege, Ifako Ijaiye, Badagry, Ojo, and Ikorodu. The training spanned from the 10th to the 29th of October 2022.



## Steering Committee Meeting

In November 2022, the IntegratE project 2.0 held a steering committee meeting, with the south region being well-represented by the Program Officer. The meeting encompassed several key objectives, including formally introducing and welcoming new members to the project team, conducting a comprehensive review of project achievements and challenges, and engaging in discussions regarding emerging issues while providing support to ensure the project stays on track.

The meeting was graced by esteemed attendees, such as Dr. Omokhudu Iddogho, the Managing Director of Society for Family Health and Head of Consortium partners, Pharm. Ibrahim Babashehu Ahmed, Chairman of the committee and Registrar of PCN, and Mrs. Tinu Taylor, Vice Chairman from the FMOH. Dignitaries like Prof. Cyril Usifoh, President of PSN, and representatives from renowned donor organizations including the Bill and Melinda Gates Foundation, MSD for Mothers Foundation, ACPN, and NAPPMED were also present. These organizations were well-represented by their national chairmen, namely Pharm. Wale Oladigbolu and Joel Odoh, respectively.

## Training of Trainers on social and behavior change materials pertaining to family planning and key household practices

In November 2022, the South Region Program Team actively engaged in a crucial training event designed specifically for IntegratE field staff. This comprehensive Training of Trainers' program focused on social and behavior change materials pertaining to family planning and key household practices.

The training spanned from the 23rd to the 27th of November 2022 and had two primary objectives:

1. Equipping IntegratE staff with in-depth knowledge and skills concerning the recently updated Social and Behavior Change (SBC) material endorsed by the Federal Ministry of Health (FMOH). The material covered both Family Planning (FP) and Integrated Community Case Management of Childhood Illnesses (ICCM).
2. Facilitating interactive discussions and knowledge-sharing sessions among participants to ensure effective adoption and implementation of the SBC material for both family planning and ICCM.



Participants during the meeting

## Supportive Supervisory Visits

In October and November 2022, the IntegratE team conducted supportive supervisory visits to trained providers (including pharmacists and PPMVs from Tiers I & II) in Enugu. During these visits, a total of 85 facilities with trained providers were targeted. Out of these, 61 facilities underwent SSV (Supportive Supervision Visit), while the remaining facilities were unavailable at the time of the visit.

To ensure that CPs and PPMVs are regularly monitored and mentored to provide quality family planning and routine PHC services. One hundred and fifty-four (154) trained providers were visited in the quarter under review, SSV and data review conducted for seventy-nine (79) providers. The aim was to improve quality data coverage, reporting and documentation for family planning and Routine PHC services provided by CPs and PPMVs. Also, twenty-four dormant facilities were reactivated.

Other Local government areas visited during SSV in the quarter under review are Alimosho, Ikorodu, Amumo Odofin, Lagos Mainland, Oshodi, Agege, Badagry, Ikeja, and Ifako Ijaiye of the state. Key issues observed include improve data documentation and reporting and use of family planning job aid during counseling.



Cross section with a trained provider during DCoP's tVisit to Enugu state



Cross section during Supportive Supervisory visit to one of the providers outlet

## Data Review Meetings

As part of the ongoing efforts to enhance data quality, the project strongly encourages thorough documentation among providers (CPs/PPMVs). In pursuit of this goal, the state team organized data review meetings in nine clusters across Lagos state. The meetings were attended by 31 CPs, 20 Tier 2, and 101 Tier 1 participants.

The primary objectives of these review meetings were threefold:

1. Conduct data cleaning and validate the accuracy of reported data by cross-referencing with the source documents.
2. Identify and capture any missing data to ensure comprehensive and reliable records.
3. Monitor and assess the performance of providers in reporting services from August to October 2022.

Additionally, the team took the opportunity to provide on-the-job training for providers who were unable to attend the previous ICCM training on documentation. Furthermore, the team engaged in discussions with providers to explore strategies for improving overall performance and documentation practices.

At each of these meetings the RM&E team verified the data of providers present by reviewing the CHMIS Family planning register, CHMIS Combined register, TB R&R tools and the CHMIS monthly summary form from August to October 2022.

## Research: PHC Follow Up Study

In November 2022, the eagerly anticipated 6th-month follow-up assessment study on Primary Healthcare (PHC) was launched. The diligent Lagos team took charge of tracking and monitoring the progress of 89 providers who took part in the initial PHC knowledge assessment baseline study. These providers included 46 Certified Practitioners (CPs) and 43 Tier 1 providers.

To ensure thorough and continuous evaluation, the team utilized phone calls to keep in touch with the participants. Every effort was made to facilitate their completion of the self-administered questionnaire. However, it has come to light that some providers faced difficulties due to compatibility issues with the form and their phones. Rest assured, we are diligently working to address this challenge and ensure comprehensive data collection for the study. Stay tuned for further updates as we make progress in this essential research initiative.

## IntegratE FULL YEAR/ WORK PLANNING MEETING

During the IntegratE full year/work planning meeting held in Abuja on November 28th and 29th, 2022, the M&E team actively participated. This meeting provided an opportunity for each state and partner to assess the achievements and activities of the previous year and to strategize for the upcoming year.

Key conclusions reached during the meeting were as follows:

- Completion of all trainings by March 31st, 2023, was emphasized.
- It was agreed that each provider should receive a comprehensive list of referral sites.
- Family Planning (FP) counseling was recognized as a vital service and should be appropriately documented.
- The need to reactivate interested but non-reporting facilities was highlighted.
- Training providers to encourage and educate clients on self-injection services was identified as a priority.
- The M&E team was assigned the responsibility of closely monitoring the implementation of the Hub and Spoke model in Lagos.

In Lagos, the project team held a planning session to refine their strategies and ensure the achievement of targets. Some of the agreed-upon action points include:

1. Conducting advocacy visits to all the ACPN & NAPPMED Zonal meetings in the Local Government Areas (L.G.A's) where the project is being implemented.
2. Enhancing provider engagement through communication channels like WhatsApp, incorporating interactive methods like trivias to increase involvement and knowledge sharing.

## Project strides in Lagos

During the period between October and December 2022, there were 8,368 clients who received counseling services in Lagos. Among them, 1,186 individuals were new family planning adopters.

Additionally, a total of 4,832 women aged between 15 and 49 years were provided with at least one form of contraception by trained CPs (Chemical Patent Medicine Vendors) and PPMVs (Patent and Proprietary Medicine Vendors) in Lagos State. Notably, out of this group, 277 women opted for long-acting contraceptive methods.



Cross section of DMD with a Trained CP Provider during her visit to Lagos

## Integrated Community Case Management

During the last quarter, trained healthcare providers attended to a total of 2,811 children aged 0 to 59 months. Among them, 1,243 children under 5 years with fever underwent MRDT testing. Furthermore, 889 children under 5 years with confirmed uncomplicated malaria received effective treatment using ACT.

In addition, 288 new cases of suspected pneumonia in children under 5 years were addressed with amoxicillin DT. To combat dehydration and promote recovery, 1,004 children under 5 years were administered pediatric ORS + zinc. These efforts reflect our commitment to providing comprehensive care and support to young children in our community.



Cross section during the team visit to Badagry LGA to conduct SSV

## UPDATES FROM NORTH -CENTRAL (NASARAWA)

### Continuous Advocacy to key Stakeholders

Throughout the quarter, the project team remained actively engaged with crucial stakeholders in the state, ensuring their continuous participation in the intervention while keeping them informed about the various stages of project implementation and ongoing activities. Notable stakeholders visited during this period include the Director of Public Health, the Director of Pharmaceutical Services, the Director of Planning, Research, and Statistics, the FP/RH Coordinator, the Director of Medical Services, the Director of Community and Family Health Services, the State Primary Health Care Development Agency, ACPN, NAPPMED, CSOs, and PCN.

These stakeholders played a vital role in the decision-making process for all activities, including the recruitment and training of IPCA, and they actively participated in and supported the review meetings. Their continuous involvement has been crucial in driving the project's progress and success in the state.



Advocacy visit to the Director Health Services (Health Secretary) Karu, LGA secretariat in company of the state PCN Coordinator, state RH/FP Coordinator and the state TS-TS focal person to seek his support to the IPCA activities in his LG.

### Partnership Meetings

The state IntegratE team actively engaged in a significant workshop during the reviewed month, hosted at the SMOH complex in Lafia. The workshop, titled "Reflection in Action to Improve Self-reliance and Effectiveness Raise Assessment," focused on conducting a thorough evaluation of the quality and sustainability of child-birth spacing interventions in the State.

Using the Reflection and Action to Improve Self-reliance and Effectiveness (RAISE) tool, the assessment aimed to identify any existing gaps and address them promptly to enhance the overall effectiveness of the interventions. The state IntegratE team, representing the private sector, participated actively in this meeting, and contributed meaningfully to the discussions on this subject.

## Demand Creation Activities

### Training of Interpersonal Communication Agents (IPCAs) on IntegratE Demand Generation Strategy

During the last quarter, the state team successfully screened, selected, and recruited the inaugural group of Interpersonal Communication Agents (IPCAs). The team then conducted a comprehensive capacity-building program for these ten IPCAs, focusing on Family Planning, Integrated Management of Childhood Illnesses (IMCI), and Social and Behavior Change Communication (SBCC) for Key Household Practices. Their designated areas of operation are Karu, Keffi, and Nasarawa LGAs.

The main objective of this training was to equip the IPCAs with the necessary skills to raise awareness about Family Planning (FP) and Primary Healthcare (PHC) services through interpersonal communication interventions, including one-on-one and group sessions, targeting women, communities, and caregivers. The training extensively covered Mobilization, Counselling, and Referral techniques to enhance their effectiveness in the field.

Moreover, the IPCAs received specialized training on digital data collection, utilizing the KoboCollect app. To facilitate their work, each IPCA was provided with an android phone to streamline data reporting.

This training initiative was made possible through the support and collaboration of the State Ministry of Health (SMOH), State Primary Healthcare Development Agency (SPHCDA), and the Local Government Health Educators from the three LGAs involved in the implementation. With the IPCAs now equipped with these essential skills and tools, they are well-prepared to make a positive impact on promoting family planning and healthcare services in their designated communities.

## UPDATES FROM NORTH-WEST (KANO, KADUNA, SOKOTO STATES)

### Participation in Mid-Term Review of Family Planning Costed Implementation 2021 – 2023 in Kano and Kaduna

The Ministries of Health in Kaduna and Kano states, under the guidance of the Federal Ministry of Health, conducted a series of workshops and consultative meetings involving stakeholders. The purpose of these gatherings was to assess and revise the costed implementation plan (CIP) for Family Planning, covering the period from 2021 to 2023.



Participants during a session at the meeting

During this mid-term review process, the IntegratE teams from Kano and Kaduna actively engaged in the evaluation alongside other partners who supported Family Planning Programs in both states. The IntegratE teams played a vital role in the review, final validation, and dissemination of the CIP documents, providing valuable input.

The existing CIPs for both states are set to conclude in 2023, and subsequently, new Family Planning CIPs will be developed for another 3-5 years, guided by the directives of the Federal Ministry of Health.

## Participation in the review of Free MNCH Policy in Kaduna state

The RPM actively participated in the technical review of the Free Maternal, Newborn, and Child Health Policy in Kaduna state. This policy has been in operation for an extended period, focusing on providing essential MNCH services, including medication, to pregnant women and children under the age of 5.

The primary aim of this review was to offer guidance to the state on enhancing the delivery of free services for pregnant women and children under the age of 5, with the ultimate goal of achieving Universal Coverage. Following the review meeting, a smaller technical committee, which included the RPM, was appointed. This committee's responsibility is to conduct a more in-depth analysis of the policy and its implementation, subsequently providing robust recommendations to the state on how to enhance and optimize the policy's effectiveness.

## Meeting with Stakeholders and Partners on CPs and PPMVs Interventions in Kano

In an effort to expand their reach, DKT International and Philips Pharmaceuticals have extended their operations to new regions in Kano, focusing on collaborating with CPs (Chemical Patent Medicine Vendors) and PPMVs (Patent and Proprietary Medicine Vendors) in the fields of family planning (FP) and malaria.

To prevent the risk of duplicating efforts, the IntegratE Project provided support to the state by organizing a meeting of stakeholders and partners. The purpose of this gathering was to establish criteria for selecting and training CPs and PPMVs in similar intervention areas, ensuring a coordinated approach without redundancy.

Key participants at the meeting included

Directors and Programme Managers from the State Ministry of Health (SMoH), State Primary Health Care Development Agency (SPHCDA), Pharmaceutical Manufacturers Group of the Manufacturers Association of Nigeria (PHIMA), State Officer of the Pharmacy Council of Nigeria (PCN), State Chairman of the Association of Community Pharmacists of Nigeria (ACPN), leadership representatives from NAPPMED, as well as management staff from Philips Pharmaceuticals, DKT International, and all other partners operating with CPs and PPMVs in the state.

As a result of the meeting, stakeholders proposed a collective agreement that all partners working within the state should ensure there is no duplication in the selection and training of providers. This objective will be achieved through the sharing of a training database and a careful selection process for CPs and PPMVs to be trained by any of the collaborating partners, with the full participation of the state in the decision-making process.

## Quarterly RMNCAEH + N Coordination Meeting

The RPM (Routine Program Manager) and STA (Senior Technical Advisor) from Kaduna participated in the Quarterly RMNCAEH+N (Reproductive, Maternal, Newborn, Child, Adolescent Health, and Nutrition) coordination meeting alongside the State Primary Healthcare Board and other esteemed partners. During this meeting, the 2023 Annual Operations Plan for the agency was thoroughly reviewed and finalized, covering essential aspects such as Reproductive, Maternal, Child, and Adolescent Health, as well as Family Planning. Moreover, partners' commitment to the proposed activities was also secured.

IntegratE took the opportunity to reaffirm its dedication to certain key initiatives in 2023. This



includes ongoing training for CPs (Community Pharmacists) and PPMVs (Patent and Proprietary Medicine Vendors), ensuring their continuous professional development. Additionally, IntegratE highlighted its commitment to providing Quality Supportive Supervision and conducting quarterly ISS (In-Service Supportive Supervision) for the trained healthcare providers throughout the year.

## Quarterly State TB Programme Implementation Partners Coordination Meeting

The Kano state team participated in the State TB quarterly coordination meeting, during which they conducted a thorough assessment of the state's performance in the fourth quarter. The meeting involved discussions about critical matters, including the stock-out of TB consumables, such as sputum cups. To address the identified gaps, a formal memo was submitted to the National TB Programme FMOH, requesting their support in resolving the issues in the state.

## TWGs and Other Coordination meetings Attended in the Quarter

The Kano team actively participated in a Reproductive Health/Family Planning TWG meeting within the state. During this meeting, the team addressed the stock out of Family Planning (FP) commodities and proposed a strategic plan for swift distribution to service points throughout the region.

Additionally, the RPM (Reproductive Health Program Manager) played a significant role in supporting the Insecticide-Treated Nets (ITN) campaign in Kano. As a member of the state ITN Local Coordinating Committee, they spearheaded the distribution of more than 8.8 Million ITNs to over 16 million people through a house-to-house distribution strategy. This ITN distribution initiative was made possible through the support of the Global Fund Malaria grant and implemented by SFH, CRS, and the National

Malaria Elimination Programme (NMEP).

Moreover, the RPM was appointed as a member of the task team for the "ZERO Malaria starts with you" campaign, collaborating with other partners, including Malaria support organizations, Traditional and Religious Leaders, Civil Society Organizations (CSOs), and Members of the Ward Development Committees, to combat Malaria in the region.

## IPCAs Demand Generation Training of Trainers

In partnership with the Health Promotion Unit of the Federal Ministry of Health, IntegratE successfully organized a 3-day Training of Trainers (TOT) program for its staff. The focus of this workshop was on the recently revised Social and Behavioral Communication (SBCC) materials related to Family Planning and Key Household Practices.

The primary objective of the TOT was to develop a competent group of trainers among the various State Technical Advisers (STAs). These trainers would then go on to organize and conduct training sessions for Interpersonal Communications Agents (IPCAs) in the states supported by IntegratE. The TOT event took place in Abuja from November 24th to 26th, 2022.

## Review of Hausa Translation of SBCC Materials

During the TOT, careful scrutiny of the Hausa Social and Behavioral Communication Materials revealed certain gaps and issues of cultural sensitivity. To ensure the materials were appropriate for community-level engagement, the Regional Project Manager (RPM) and the State Technical Adviser (STA) for Kano collaborated with the Communication lead and the graphic artist to address these concerns. The revision process aimed to rectify common mistakes and align the materials better with the cultural context.

## Training of IPCAs in Kaduna and Kano States

Following the successful TOT in Abuja on the IPCA SBCC materials, training sessions were conducted in Kaduna and Kano states. A total of 57 IPCAs (30 from Kaduna and 27 from Kano) participated in the stepdown training. The training saw active involvement from the Health Promotion Unit of the Federal Ministry of Health, Health promotion officers from the State Ministries of Health, State Primary Health Care Boards, as well as Ward Development Committees. To ensure continuity and preparedness, each state trained five additional IPCAs as backups in case of attrition among the statutory IPCAs. The training in Kaduna was graced by the presence of IntegratE Project Director, Pharm Emeka Okafor, while the Kano training received support from Ifeoma Ugochukwu of the Health Promotion Unit of the Federal Ministry of Health. The IPCAs are set to begin their sessions in January 2023, ready to make a positive impact in their respective communities.

## Ensuring Quality Services: Supportive Supervisory Visits in Kaduna and Kano States

In pursuit of providing high-quality Family Planning and Primary Health Care services in Kaduna and Kano states, the IntegratE project conducted rigorous Supportive Supervisory Visits (SSVs) to partner facilities. In Kaduna, 417 partner facilities, including 55 Community Pharmacists, 158 non-health trained Patent and Proprietary Medicine Vendors (PPMVs), and 204 health trained PPMVs were visited. Similarly, in Kano, 388 trained facilities, comprising 7 Community Pharmacists, 220 non-health trained PPMVs, and 161 health trained PPMVs (with 129 in Tier 2 and 32 in Tier 3) underwent SSVs during the quarter.

These SSVs served as valuable opportunities to ensure that Family Planning and Primary Health Care services adhered to national guidelines. Providers received mentoring on proper record-keeping and reporting procedures, empowering them to deliver top-notch services. Additionally, the visits supported providers in completing their license registration and renewal process with the Pharmacy Council of Nigeria (PCN).

The focus remained on elevating the quality of services, particularly concerning DMPA-SC, where providers were supported to enhance their capacity and confidence in providing and guiding clients on self-injection. Furthermore, new sites trained on MEPTP (Malaria in Early Pregnancy Test and Treat) in September 2022 were activated, and adherence to national guidelines for service delivery, including Malaria testing, treatment, and referral, as well as the use of Amoxicillin DT for pneumonia treatment, was ensured.

The teams from both states also successfully conducted Integrated Supportive Supervisory Visits (ISSVs) during the first quarter of Year 2. With active participation from stakeholders such as the Pharmacy Council of Nigeria (PCN), State Ministries of Health (SMOH), State Primary

Health Care Development Agencies (SPHCDA), Pharmaceutical Society of Nigeria (PSN), National Association of Patent and Proprietary Medicine Dealers (NAPPMED), and Women Development Committees (WDCs), a total of 116 providers in Kaduna and 85 providers in Kano were visited.

Following the ISSVs, a comprehensive review meeting was organized, where all stakeholders shared their findings and jointly developed action plans to address identified gaps. This collaborative approach ensures the ongoing enhancement of services and strengthens the commitment to delivering high-quality care in both states.

## MEPTP Exam

The latest batch of MEPTP-trained PPMVs from three schools in Kano - Aminu Dabo College of Health Technology, Bichi Academy, and Emirates College of Health Technology recently completed their final examinations, organized by the Pharmacy Council of Nigeria. The examination, held on November 12, 2022, saw the participation of 312 trained PPMVs.

## MEPTP Certificate Presentation Ceremony

In a significant ceremony, the Pharmacy Council of Nigeria (PCN) supported the presentation of certificates to successful MEPTP exam candidates from the first batch trained in both Kaduna and Kano states. The certificate presentation ceremony took place on November 23, 2022, in Kano, and December 7, 2022, in Kaduna. The vibrant events were graced by the presence of esteemed individuals, including Pharm. Emily Olalere - PCN Director of Programmes, PCN HQ Abuja team, PCN zonal and states officers, stakeholders from State Ministries of Health, SPHCDA, HMB, PHIMA/PHE, NAPPMED, ACPN states officials, partners, and IntegratE staff

## Hub & Spoke Training

The Pharmacist Council of Nigeria provided valuable support in organizing training for eight selected Hubs in Kano, along with project staff comprising PCN and IntegratE personnel. This training, held on November 22, 2022, involved the education of 23 technical staff members, including 8 Hubs, 5 PCN National, 2 PCN Kaduna, 3 PCN Kano, and 5 IntegratE staff.

The chosen 8 hubs, consisting of 2 NAPA, 1 AHPN, 4 ACPN, and 1 NAIP, were tasked to operate in 8 clusters alongside 104 spokes. The Spokes, selected from the 8 Metropolitan LGAs in Kano state (1 cluster per LGA), were trained on hub spoke supervision guidelines and the PCN checklist for supervisory visits. Furthermore, the participants were presented with the Research and M&E Plan, as well as preliminary results from the Baseline conducted in Kaduna and Lagos during August and September 2021. The training also included discussions on the follow-up plan with the participants.

In Kaduna state, PCN trained 18 technical personnel (8 Hubs, 4 PCN Kaduna, 4 IntegratE staff, DPS, PSN) on Hub and spoke supervision. The 8 selected hubs (4 ACPN, 2 NAPA, and 2 AHAPN) were

assigned to supervise 112 spokes (PPMVs who participated in the Drug Stock Assessment baseline) selected from 6 LGAs in Kaduna state (3 clusters in Zaria and Sabon Gari LGAs) and 5 clusters from Kaduna metropolitan LGAs (Igabi, Chikun, Kaduna north, Kaduna south). The 16 Hubs have signed consent forms and conflict of interest forms with PCN.

Next Steps:

The following steps are planned for the coming months:

- Issuance of appointment letters - December
- Meeting between Hub and Spoke - December
- Commencement of supervision - December/January 2023

These developments mark significant progress in the MEPTP program and its efforts to enhance pharmaceutical services and healthcare delivery in the region.

## Quarterly Review Meeting for CPs and PPMVs in Kano

The IntegratE Project recently conducted its Quarterly Providers Review Meeting (QPRM) in Kano and Kaduna, with a focus on enhancing service delivery and data quality. The meeting addressed various service quality, documentation, and reporting gaps identified during supportive supervisory mentorship and Data Quality Assessments (DQA) visits.

The QPRM served as a valuable platform to foster better communication and collaboration between the IntegratE project staff, trained Community Pharmacists (CPs), and Patent and Proprietary Medicine Vendors (PPMVs) in the community, alongside other stakeholders and state partners.

During Quarter 1 of Year 2, IntegratE 2.0 QPRM was held for PPMVs (both health trained and non-health trained) and CPs. The event took place from October 1 to 3, 2022, in Kano and from October 7 to 13, 2022, in Kaduna.

Key outcomes of the QPRM:

1. **Broad Attendance:** A total of 124 providers (96 PPMVs and 28 CPs) attended the Providers' Review Meeting in Kano, while 540 providers (42 CPs, 124 Tier 1, and 374 Tier 2 PPMVs) participated in Kaduna. These providers were drawn from various program implementation Local Government Areas (LGAs) across both states.
2. **Enhanced Reporting Rate:** During the meetings, the reporting rate summaries for the quarter (July to September 2022) were presented to all attendees. PPMVs were provided support to upload their reports to the DHIS2 server and the project's CHMIS google database. Remarkably, there was an average increase of 59% and 68% in reporting rate across all provider categories in Kano and Kaduna, respectively, as all validated reports were successfully uploaded for the review period.

3. **Mentorship for Improved Data Quality:** PPMV mentors assisted in data validation and reporting in Kaduna, while four identified potential mentors supported their peers in Kano state. The utilization of mentors proved to be a driving force for PPMVs to enhance their service delivery, documentation, and reporting practices.
4. **Emphasis on Proper Documentation:** Providers were mentored on proper documentation and accurate reporting of summary statistics. Observed data quality gaps, including completing all required data fields in service documentation and reporting tools, as well as using client records and providing precise summary statistics, were addressed during the meetings. Providers were encouraged to uphold standardized record-keeping practices.
5. **Research Agenda Awareness:** Attendees were sensitized to the research agenda of the project, particularly focusing on the PHC knowledge retention follow-up self-assessment in Kaduna and Kano states, along with the baseline drug stock practices assessment among PPMVs in Kano state.
6. **Distribution of Essential Materials:** M&E documentation and reporting tools, IEC materials, BCS+ counseling cards, and posters were distributed to providers based on their needs. The Quarterly Providers Review Meeting served as an invaluable opportunity for the IntegratE Project to reinforce collaboration, knowledge-sharing, and skill enhancement among healthcare providers, ensuring improved service delivery and data quality across Kano and Kaduna states.

## Data Quality Assurance (DQA)

The North-west regional RME team recently carried out a comprehensive Data Quality Assessment for 43 facilities, including Community Pharmacists (CPs) and Patent and Proprietary Medicine Vendors (PPMV). Specifically, 11 facilities were assessed in Kano state, while 32 facilities were evaluated in Kaduna state. The DQA focused on the reporting periods of August to October (3 facilities) and September to November 2022 (40 facilities).

In Kano state, the assessment covered nine PPMVs, consisting of 2 pharmacy technicians (Tier 3), 4 health-trained (Tier 2), and 3 non-health-trained (Tier 1) PPMVs, along with 2 CPs. The overall average DQA performance across the assessed CPs and PPMVs was 85% across all three domains. The evaluation revealed that more than 90% of providers required varying degrees of mentorship in areas such as proper documentation, consistent and correct use of client records (FP client cards and sick child forms) for eligible clients, and accurate and timely reporting of summary statistics. To address the identified gaps, remediation plans were collaboratively developed by the assessors and trained providers of the assessed shops and CPs. Providers received mentoring on complete, correct documentation, and reporting, with a focus on specific areas needing improvement. Client cards and sick child forms were distributed to all trained providers who were then mentored onsite accordingly.

In Kaduna state, 32 providers were assessed, drawn from 28 PPMVs (22 health-trained and 6 non-health-trained) and 4 CPs in Zaria, Chikun, Igabi, and South LGAs. The average DQA performance across the assessed CPs and PPMVs improved to 88.5% (a 2% increase from the last quarter) across all three domains. However, data consistency ranked lowest due to the inconsistent use

of client records (Sick child form FP client cards) for eligible clients. To address this, remediation plans were developed jointly by the assessors and trained providers of the assessed shops and CPs. Providers were mentored on complete, correct documentation, and reporting, with a specific focus on improving data consistency. Client cards and sick child forms were appropriately distributed to all assessed CPs and PPMVs, and providers received onsite training on consistent use of client records, documentation, and transfer to appropriate service registers.

Moving forward, the assessed providers will receive follow-up support to encourage compliance with the remediation plans. The RME team intends to utilize the quarterly providers' review meeting scheduled for January 2023 to disseminate the DQA findings and address all observed gaps comprehensively.

## PHC Knowledge Follow-up Assessment for CPs in North-West Region

The RME team has begun collecting data for the 6-month PHC Knowledge Follow-up assessment, focusing on eligible CPs in the North-West region. So far, 26 CPs in Kaduna (60.5% completion rate) and 44 CPs in Kano (71% completion) have successfully completed the self-assessment.

The team plans to conclude the PHC Knowledge follow-up assessment for eligible CPs and PPMVs from Kano, Kaduna, and Sokoto in the second quarter of the year 2022.

## Baseline Drug Stock Practices Assessment in Kano

Within the quarter, the RME team conducted a virtual training session for three research assistants from Kano state. The training was specifically for the baseline Drug Stock Practices assessment of PPMVs who had completed the Mandatory Entry Point Training Program (MEPTP) in Kano state.

Following the training, the research assistants were deployed to the field, and successfully assessed all 100 selected PPMVs, including 27 non-health trained (Tier 1), 36 health trained (Tier 2), and 37 pharmacy technicians (Tier 3) PPMVs, achieving a remarkable 100% completion rate.

## 2022 Nigeria Family Planning Conference

The IntegratE team had a significant presence at the 7th Nigeria Family Planning Conference held in Abuja from 12th to 16th December 2022. The RME Advisor from the Population Council, Kaduna, delivered two oral presentations. The first presentation, Oral-044, focused on "Improving Data Reporting in the private sector: Lessons from a DHIS2 pilot with Community Pharmacists and Patent and Proprietary Medicine Vendors in Lagos and Kaduna, Nigeria." The second presentation, Oral-047, shed light on "COVID-19 and the virtual approaches adapted for monitoring and reporting of family planning routine services in Kaduna and Lagos states."

Both presentations drew an audience of 15 attendees (10 females and 5 males) and sparked insightful discussions. Six questions were raised during the sessions, covering topics such as motivations for reporting among CPs and PPMVs, ensuring data quality, data use, feedback to CPs and PPMVs, and the hybrid training methodology (virtual and in-class) piloted during the COVID-19 restrictions. The project team provided satisfactory answers to all inquiries and received commendation for their outstanding work.

## UPDATE FROM NORTH-EAST (GOMBE STATE)

### Advocacy Meetings

Throughout the quarter, the state team actively engaged in a series of advocacy meetings with essential stakeholders, including the Director of Pharmaceutical Service (SMOH), the Director of Family and Community Health department and their team (GSPHCDA), Pharmacy Council of Nigeria (PCN), State leadership of ACPN, NAPPMED, Districts heads, and the BMGF State Representative. The primary objectives behind these visits were to maintain their ongoing support and commitment to the project while also providing them with regular updates on the status of project implementation.



Advocacy visit to the District head prior to an outreach



The COP with the Director Finance & Admin GSPHCDA

### Bauchi State Familiarization Visit

During the quarter, the Regional Programme Manager conducted a familiarization visit to Bauchi state, engaging with key stakeholders in the region. The purpose of this visit was to update the stakeholders on the upcoming launch of the IntegratE 2.0 project in the state. The Regional Manager held productive meetings with the leadership of ACPN, NAPPMED, PCN State Officer, Director of Public Health, and the Permanent Secretary of the Ministry of Health.

During these meetings, the stakeholders were provided with detailed information about the project's goals, intermediate outcomes, and deliverables for the state. Their response was positive, expressing their readiness to extend support once the project's implementation begins. Additionally, they encouraged a collaborative approach with the IHP funded by USAID to ensure synergy and maximize the impact of both initiatives.

## Interpersonal Communication (IPC) Stakeholders Meeting

The state project team organized a sensitization meeting with essential stakeholders to introduce them to IntegratE's demand creation strategy and seek their support and commitment for successful implementation. The Director of Community and Family Health chaired the meeting, with representatives from SMOH, GSPHCDA, ACPN, NAPPMED, and project staff also in attendance. By the end of the meeting, roles and responsibilities were assigned to participants to facilitate the recruitment of IPC Agents.



Training on recording keeping using the CHMIS during the MEPTP in Gombe state

## Project Related Meetings

The state project team actively participated in various project-related meetings, both virtually and in-person. These meetings encompassed the project steering committee gathering, a training of trainers' workshop on revised social and behaviour change materials for Family Planning (FP) and integrated community case management of childhood illnesses, and a year 2 work planning retreat to strategize and develop the work plan for 2023.

## MEPTP's Facilitators Refreshing Training

To enhance the quality of training delivered by schools, the state project team organized a refresher training for MEPTP Facilitators, focusing on Family Planning (FP) and integrated community case management of childhood illnesses. This update training, which included a valuable feedback session, was designed to address identified gaps from the initial training cycle conducted in June 2022.

## Mandatory Entry Point Training Program (MEPTP) Update

Throughout the quarter, the MEPTP enrolled an additional 96 Private Patent Medicine Vendors (PPMVs), comprising 10 tier 1, 80 tier 2, and 6 tier 3 participants. These individuals received training in family planning, integrated community case management of childhood illnesses, and documentation using the community health management information system.

With this latest cohort, a total of 204 PPMVs (101 tier 1 and 103 tier 2) have been trained since the program's inception, constituting 81.2% of the state target. The state team, in collaboration with the PCN, remains committed to achieving the training target for Gombe state before the next quarter concludes.

Post-training activation visits will be carried out by the state project team to support the newly trained PPMVs in effectively providing integrated community case management for malaria, pneumonia, diarrhea, malnutrition, and family planning.

The training sessions were conducted at the schools of health sciences and technology in Garkuwa and Kaltungo, Gombe state.



## IntegratE Empowers Interpersonal Communication Agents (IPCA) to Drive Demand Generation

In line with our commitment to bolstering the implementation of the IntegratE demand generation strategy, we recently recruited 8 IPCAs during the quarter. To ensure they are equipped for success, the state team conducted comprehensive training sessions for these IPCAs, focusing on IntegratE's social and behavioral change materials for Family Planning (FP) and Integrated Community Case Management (iCCM).

The primary role of our dedicated IPCAs is to raise awareness about the importance of FP and Primary Healthcare (PHC) services through personalized communication interventions, engaging with women, communities, and caregivers. They aim to reach the target audience and refer them to our well-trained IntegratE Providers, who offer expert counseling for the uptake of services.

To enhance their capabilities, the IPCAs also underwent training in digital data collection using the KoboCollect app. As part of our efforts to facilitate their work, each IPCA received an android phone to ensure efficient data reporting.



Using the MUAC tape and Malaria rapid diagnostic test kit at an outreach in Akko LGA, Gombe state

## Supportive Supervisory Visit (SSV) to Gombe State by Chief of Party

In the recent quarter, Pharmacist Emeka Okafor, the Chief of Party, paid a visit to Gombe State to provide mentorship and support to the project team while engaging with essential stakeholders. During the visit, the COP held productive discussions with project staff and influential individuals in the state.

Furthermore, as part of the visit, the Chief of Party extended his assistance to 10 IntegratE trained Providers in Gombe and Akko Local Government Areas (LGAs). The visit aimed to offer guidance and encouragement to these Providers, reinforcing the project's commitment to their growth and success.

## LARC Competency Assessment for PPMVs

The post-training competency assessment on Long-Acting Reversible Contraceptives (LARC) for tier 2 PPMVs, who were trained in July 2022, has commenced in the state. The assessment is being conducted at two public facilities, namely State Specialist Hospital Gombe and PHC Kalarung Kaltungo. During the 3-month assessment period, each PPMV is expected to carry out a minimum of 12 Implant insertions, 3 removals, and 5 injectables to be considered proficient. The assessment is overseen by the Gombe State Reproductive Health Coordinator and anchored by 2 FP Consultants.

## Integrated Supportive Supervisory Visit (ISSV)

The state project team facilitated the inaugural ISSV, aiming to mentor CPs and PPMVs during service delivery. The supervisory team, consisting of 38 providers (2 CPs and 36 PPMVs), utilized the FMOH ISS checklist during their visits. The ISSV evaluated PPMVs' knowledge on FP balanced counseling and integrated community case management of childhood illnesses, providing coaching to enhance their counseling skills for better service delivery. The teams also assessed registration/licensure with PCN, stocking practices, disposal of waste, branding of premises, and the use of job aids during counseling and documentation.

### Observations from ISSV:

- Documentation of FP and PHC services provision using the community health management information system (CHMIS) was generally good, although some providers faced challenges with it.
- Branding of most facilities with FP logs was satisfactory.
- All visited PPMVs were registered with PCN.
- Many providers demonstrated poor balanced counseling skills due to underutilization of job aids.
- Some shops lacked sufficient space for effective counseling of clients.
- A referral directory for the project has not been provided to the providers yet.

## Quality/Routine Supportive Supervisory Visit (QSSV)

During the review quarter, routine and quality supportive supervisory visits were conducted in 113 facilities, including 7 CPs, 80 tier 1 PPMVs, and 26 tier 2 PPMVs across the state. These visits aimed to mentor providers on offering quality FP and PHC services and proper data reporting. Providers received feedback based on their performance, and observed gaps were addressed during the visits. Additionally, the state project team distributed job aids to providers and branded their facilities with the FP log.

## Data Quality Assessment (DQA)

In the last quarter, the team conducted a Data Quality Assessment (DQA) in 15 facilities (PPMVs) located in Gombe, Kaltungo, Akko, Billiri, and Shongom LGAs. The assessment focused on evaluating the performance of three key domains of DQA, namely data availability, consistency, and validity. The assessment period covered data from July, August, and September 2022. During the process, the team provided mentoring to the PPMVs, emphasizing the importance of accurate and complete documentation and reporting while addressing any observed gaps.



Routine and quality supportive supervision visits to mentor Providers

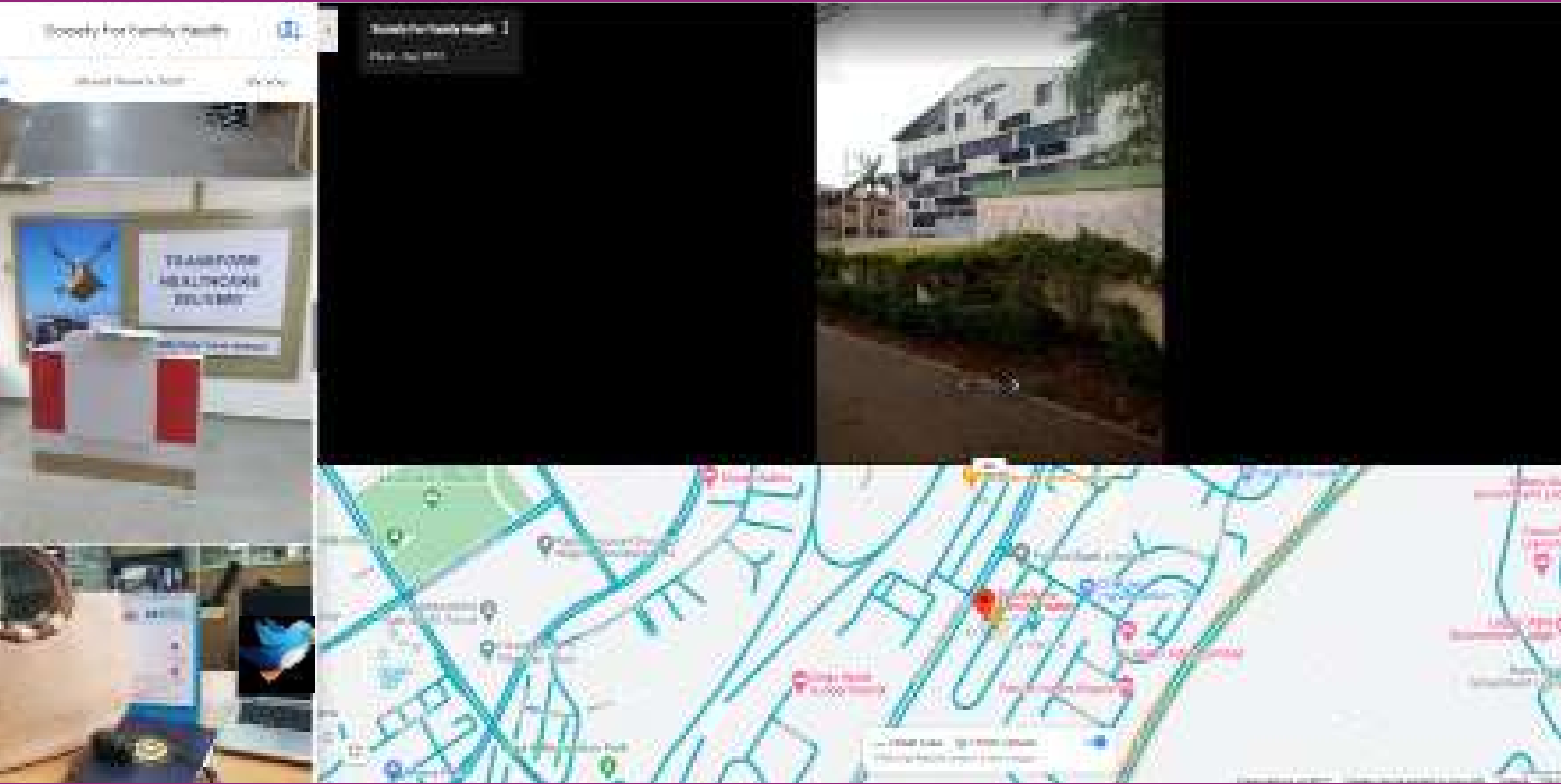
## Knowledge Retention Study


A six-month knowledge retention study for Community Promoters (CPs) on Primary Healthcare (PHC) services was conducted during the quarter. This study was carried out six months after the CPs received training on PHC services from the project. Seventeen CPs actively participated in completing self-administered questionnaires for the study. The analysis of the study is currently ongoing, and the findings will be shared with key stakeholders at an appropriate time.

## Pre-test of FMOH SBCC Materials

During the review quarter, the state project team provided support for the pre-test of newly developed SBCC (Social and Behaviour Change Communication) materials by the Federal Ministry of Health (FMOH). The state team efficiently coordinated the pre-test by mobilizing community members to participate in focus group discussions, ensuring representation from various target groups. Additionally, the team managed the logistics aspect of the fieldwork. The FMOH team expressed their satisfaction with the pre-test results, stating that all objectives were achieved, and they were pleased with the quality of the participants and their representation.

# connect with us



 3rd Floor, Justice Ifeyinwa Nzeako House. #8 Port Harcourt Crescent, Area 11, Garki, Abuja.

 SFHIntegratE

 IntegratEProject

 IntegratEProj

 <https://integrateproject.org.ng/>

## #knowitplanit

  
**IntegratE**

PERMANENT ACCESS TO QUALITY FAMILY PLANNING SERVICES FOR MATERNAL HEALTH AND SURVIVAL